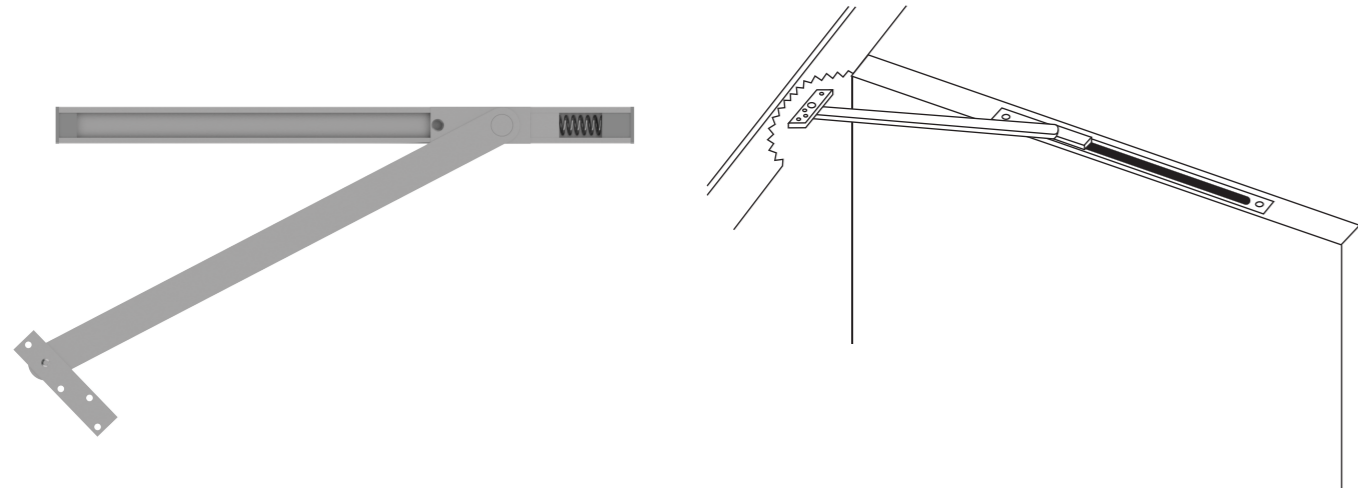


# TYPES OF OVERHEAD STOPS

Most models of overhead stops can be used on doors of any hand. Overhead stops are available in three basic designs : **Channel, Pivot and Rod Arm.**

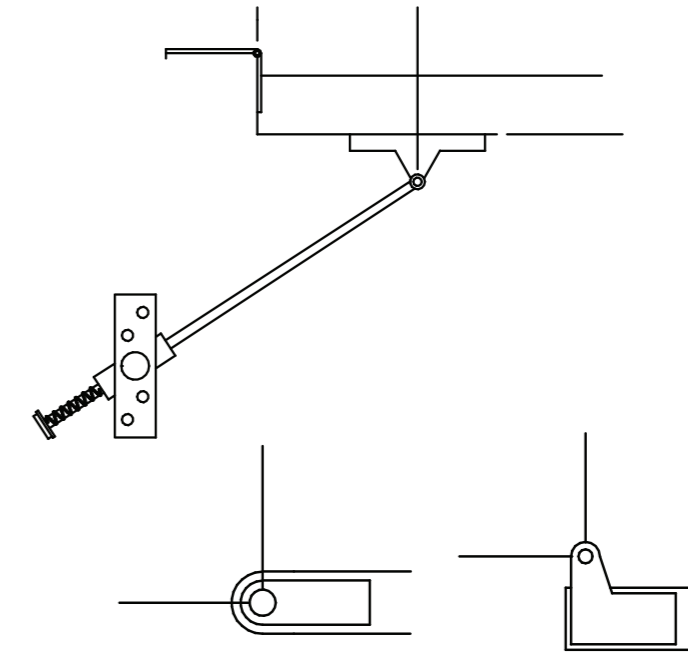
## CHANNEL TYPE

The channel design is the most popular of the three designs because it is available in surface and concealed models. Channel type overhead stops have an extruded metal channel that can be surface-mounted or mortised into the top rail of a door. The rigid arm is formed of wrought metal and is attached to a mounting bracket on the head of the frame and a slide mechanism that glides in the channel. A spring assembly in the end of the channel provides the shock-absorbing feature when the slide contacts the spring. Concealed overhead stops and holders can be used on single- or double-acting openings.



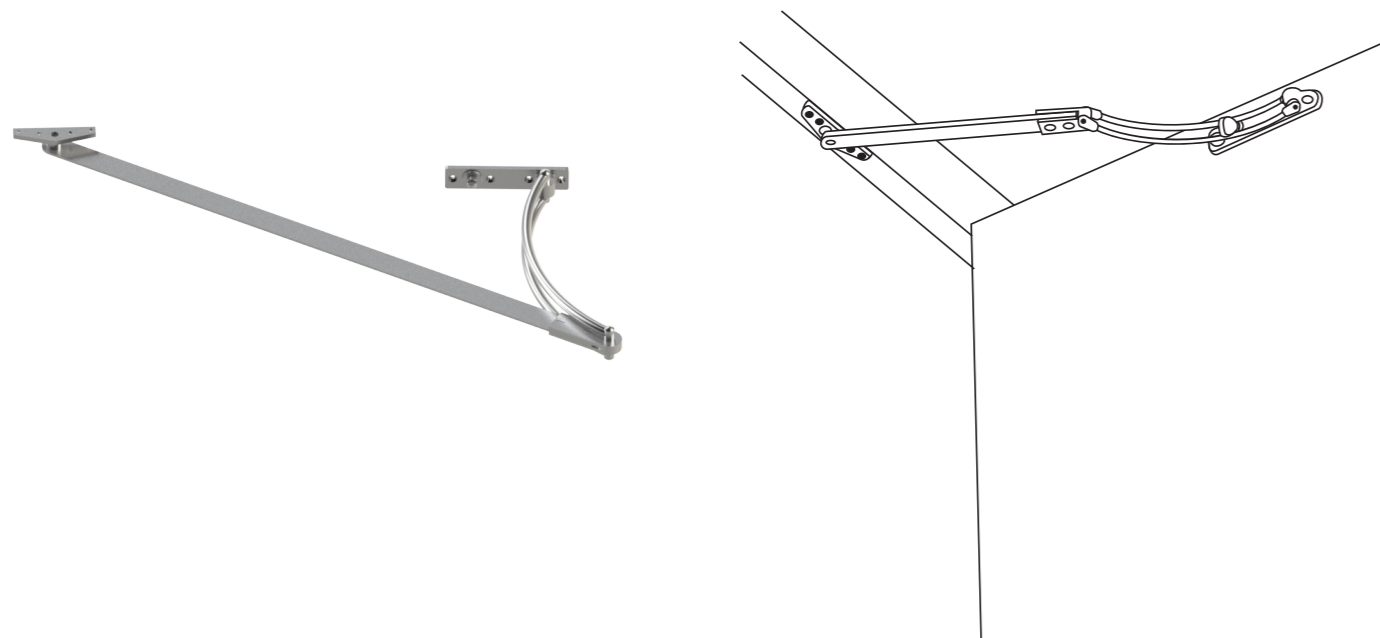
## ROD TYPE

Rod type overhead stops have an extruded arm that attaches to the face of the door and glides through a bracket mounted to the head of the door frame. A spring assembly is attached to the free end of the arm and engages the bracket as the door is opened to its full position. Rod type overhead stops are usually used only in locations where aesthetics are not a concern.



## PIVOT TYPE

Pivot type overhead stops consist of a two-piece forged arm, similar to the arm used on regular or parallel arm surface mounted door closers. One end of the arm is attached to the frame and the other end is attached to the door.



## LIGHT, MEDIUM AND HEAVY DUTY OVERHEAD STOPS

Overhead door stops are classified as heavy duty, medium duty or light duty. The primary differences in each classification are thickness of the arms and channels and the size of the springs, buffer blocks and fasteners.

